

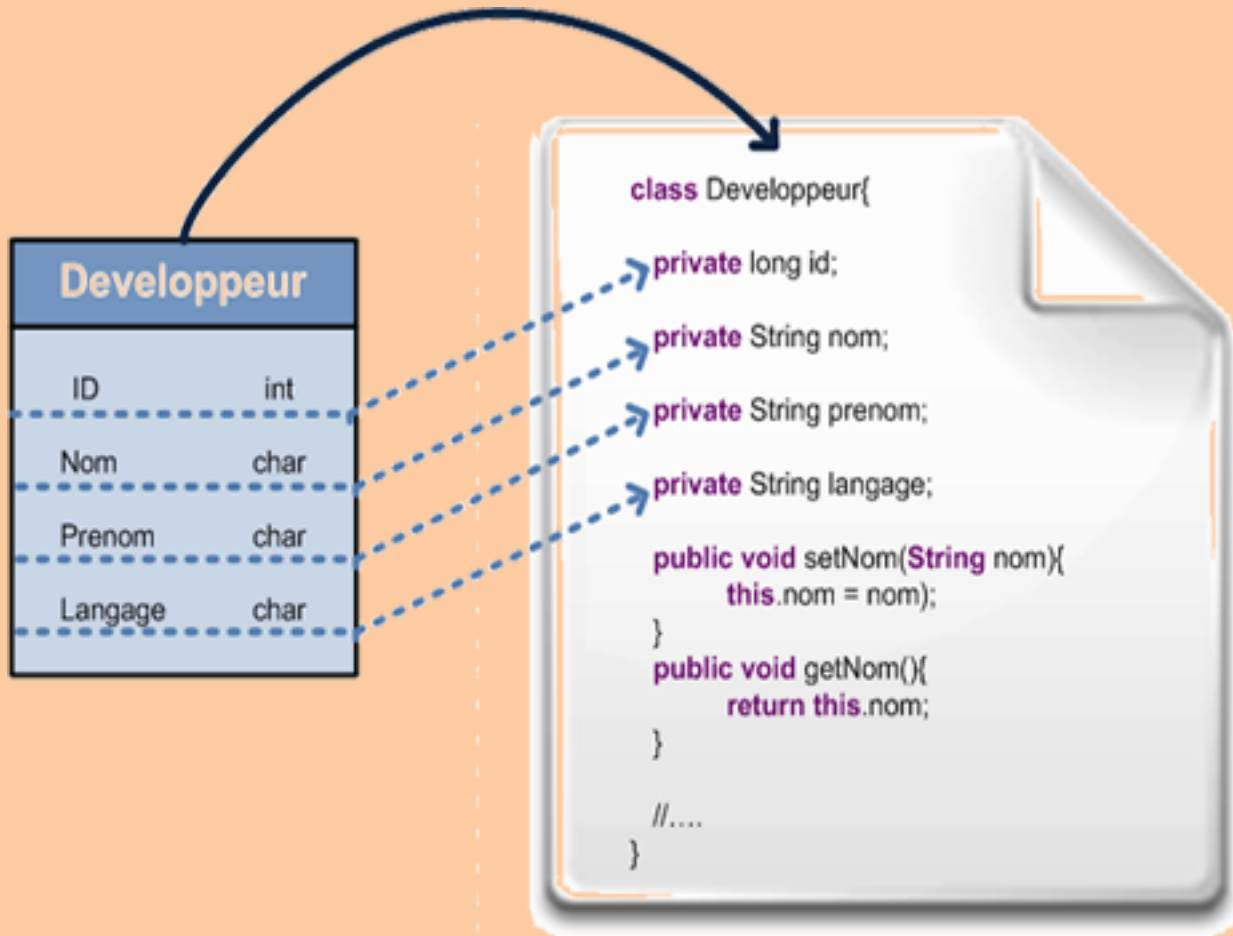
Pattern DAO

(Objet d'accès aux données)

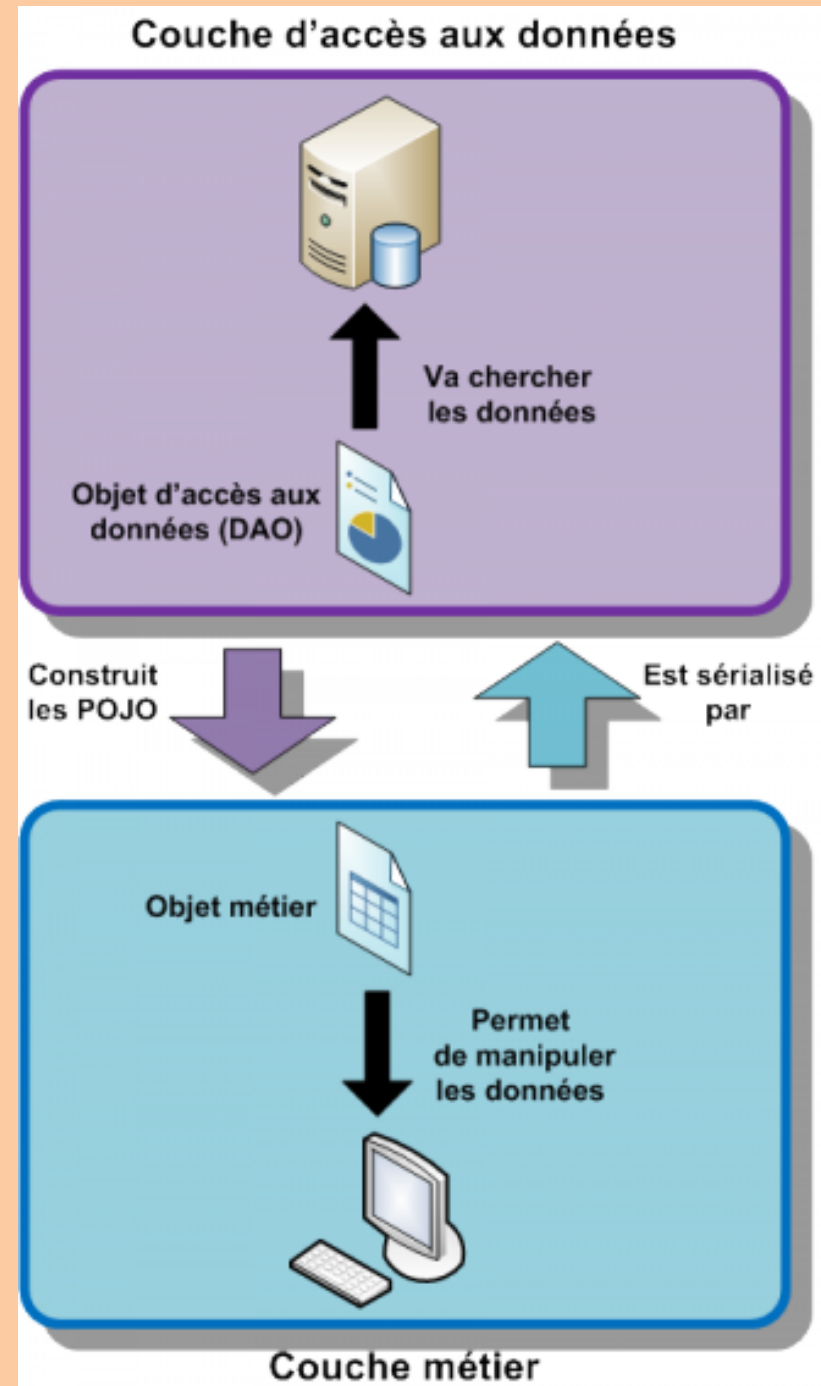
Ou comment faire pour utiliser les données de ma base de données dans mes codes Java par exemple

William Zaborowski

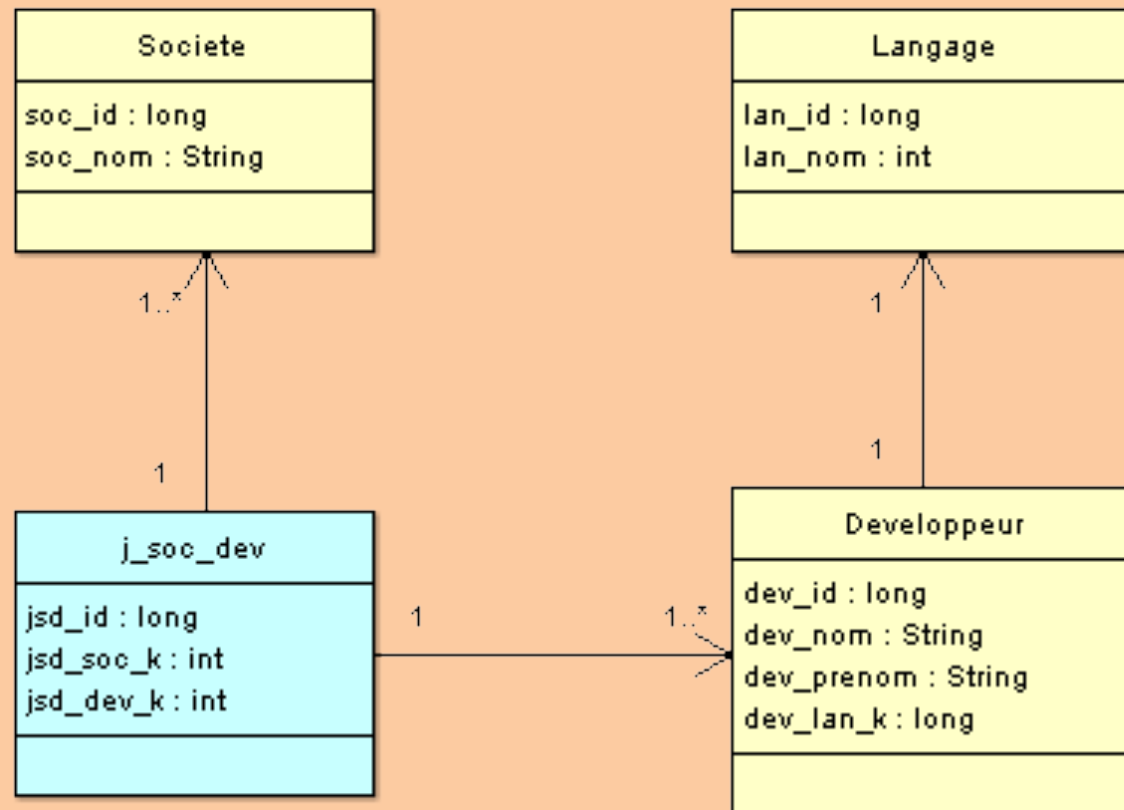
Mapping



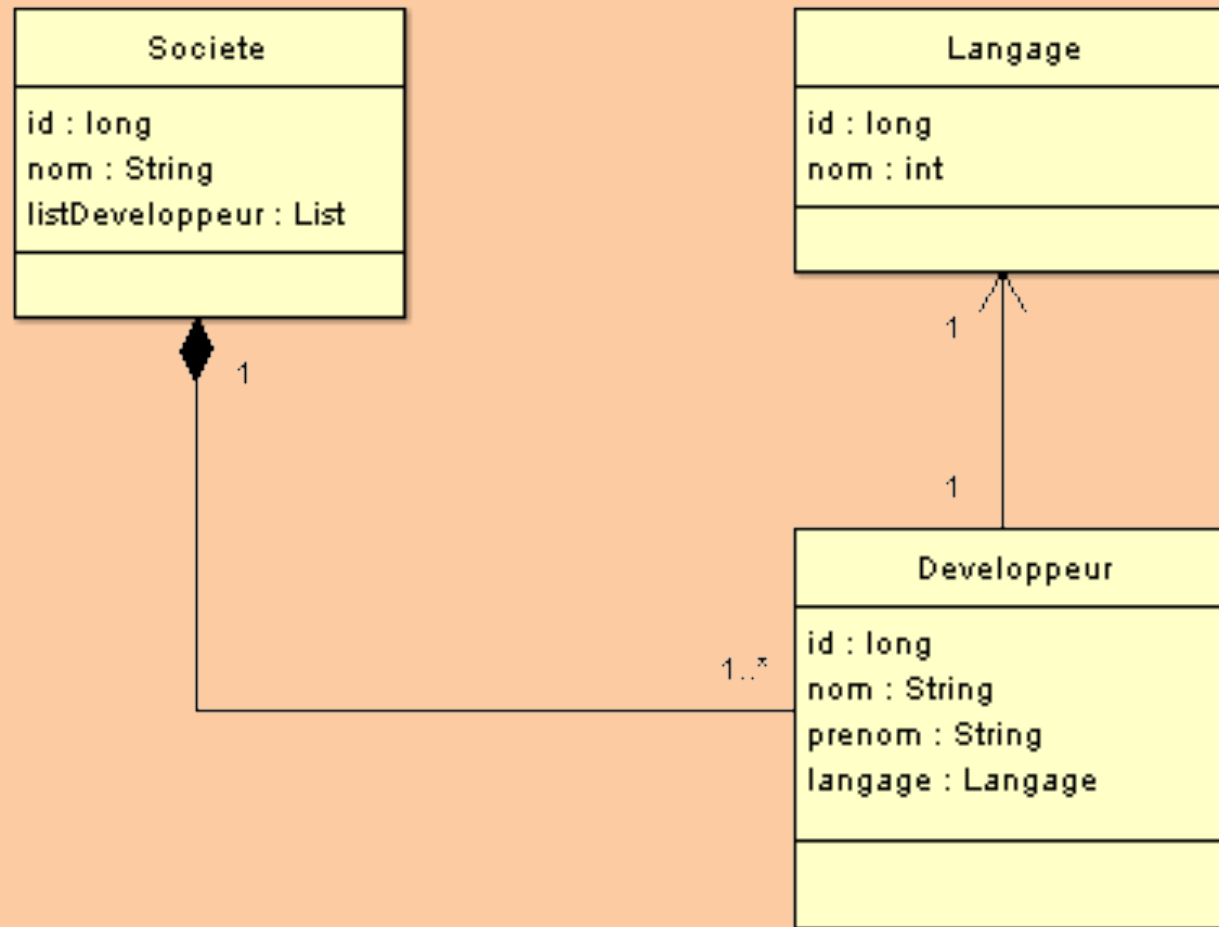
Fonctionnement du pattern DAO



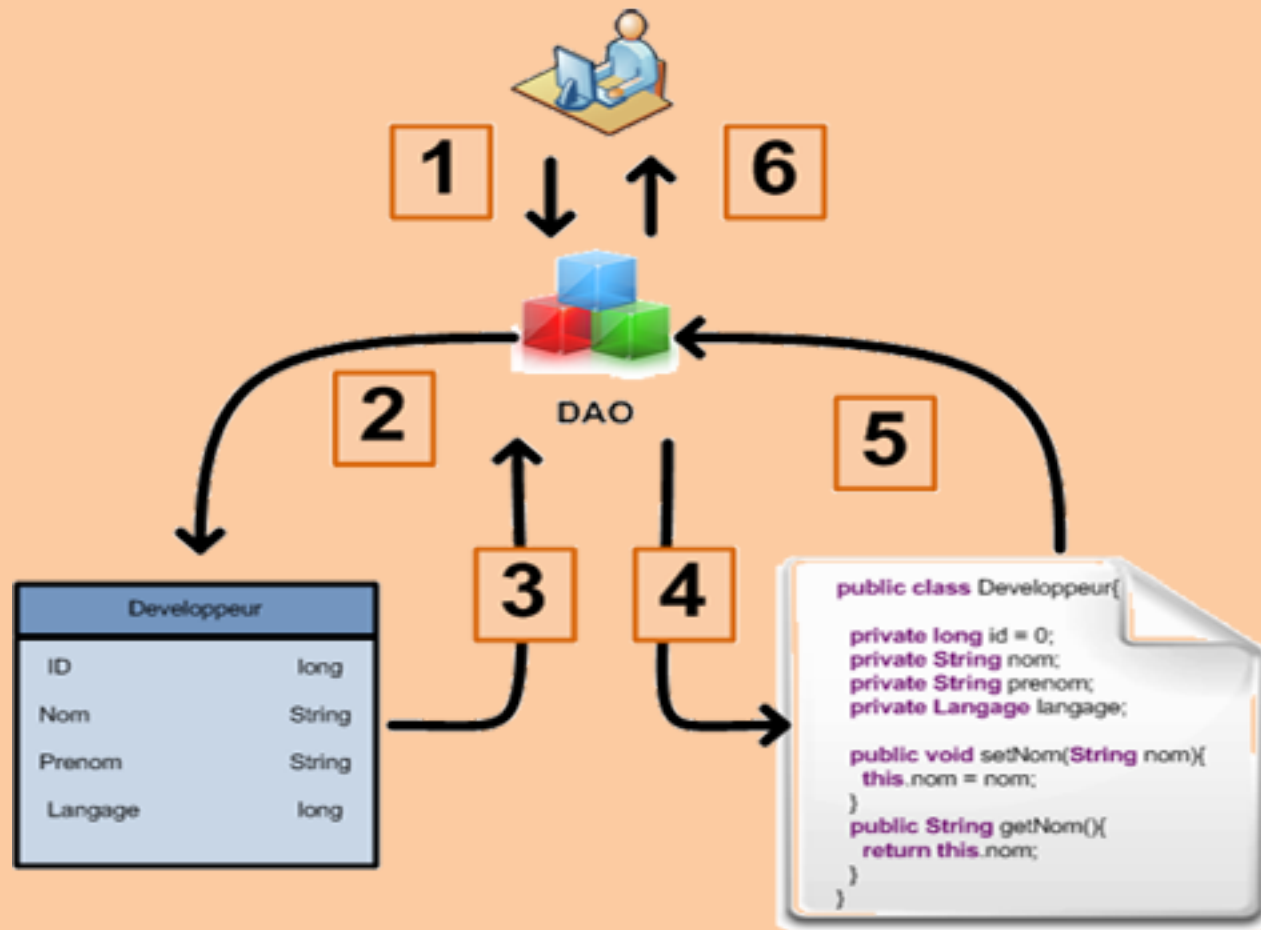
Exemple



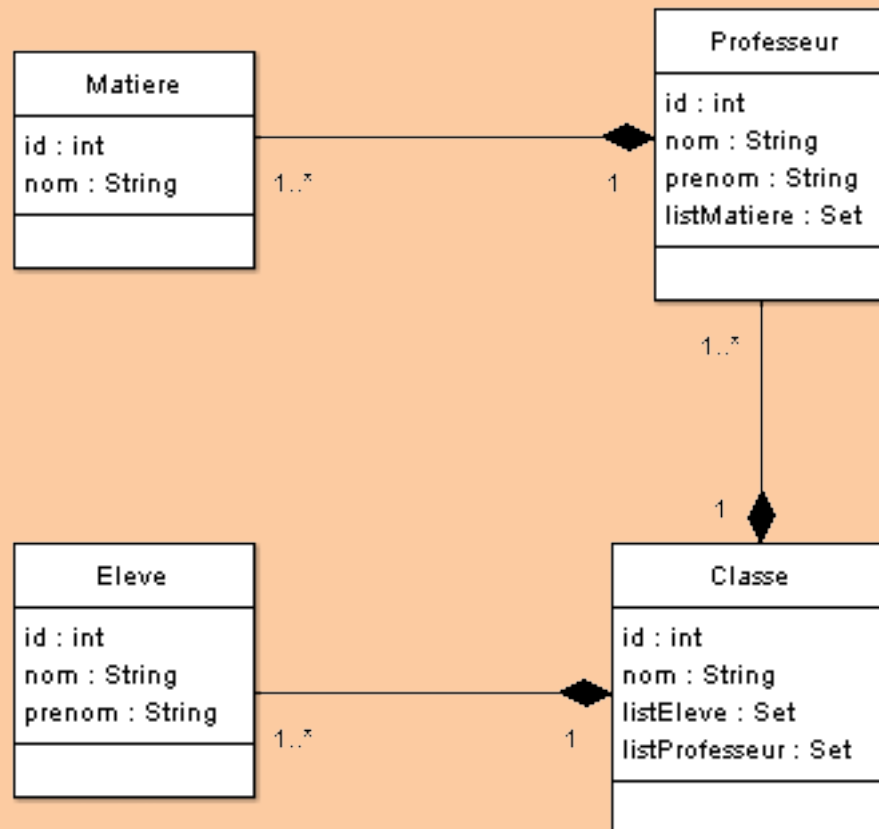
Exemple



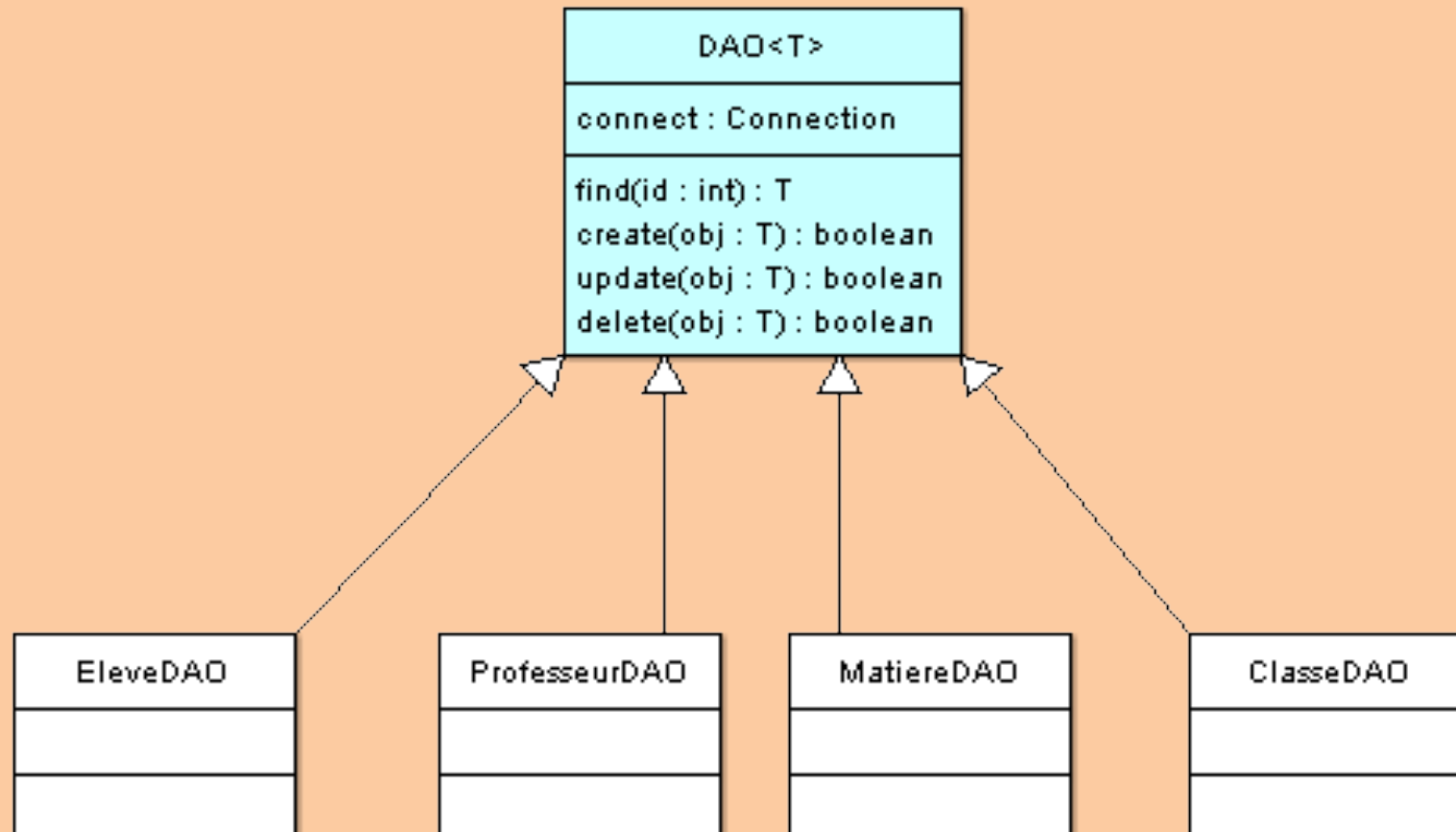
Exemple



Exemple (2)



Exemple (2)



Exemple (2) : Afficher les professeurs

```
//Voyons voir les professeurs
DAO<Professeur> profDao = new ProfesseurDAO(SdzConnection.getInstance());
for(int i = 4; i < 8; i++){
    Professeur prof = profDao.find(i);
    System.out.println(prof.getNom() + " " + prof.getPrenom() + " enseigne : ");
    for(Matiere mat : prof.getListMatiere())
        System.out.println("\t * " + mat.getNom());
}
```

```

public Classe find(int id) {
    Classe classe = new Classe();
    try {
        ResultSet result = this.connect.createStatement(
            ResultSet.TYPE_SCROLL_INSENSITIVE,
            ResultSet.CONCUR_READ_ONLY
        ).executeQuery("SELECT * FROM classe WHERE cls_id = " + id);

        if(result.first()){
            classe = new Classe(id, result.getString("cls_nom"));

            result = this.connect.createStatement().executeQuery(
                "SELECT prof_id, prof_nom, prof_prenom from professeur " +
                "INNER JOIN j_mat_prof ON prof_id = jmp_prof_k " +
                "INNER JOIN j_cls_jmp ON jmp_id = jcm_jmp_k AND jcm_cls_k = " + id
            );

            ProfesseurDAO profDao = new ProfesseurDAO(this.connect);

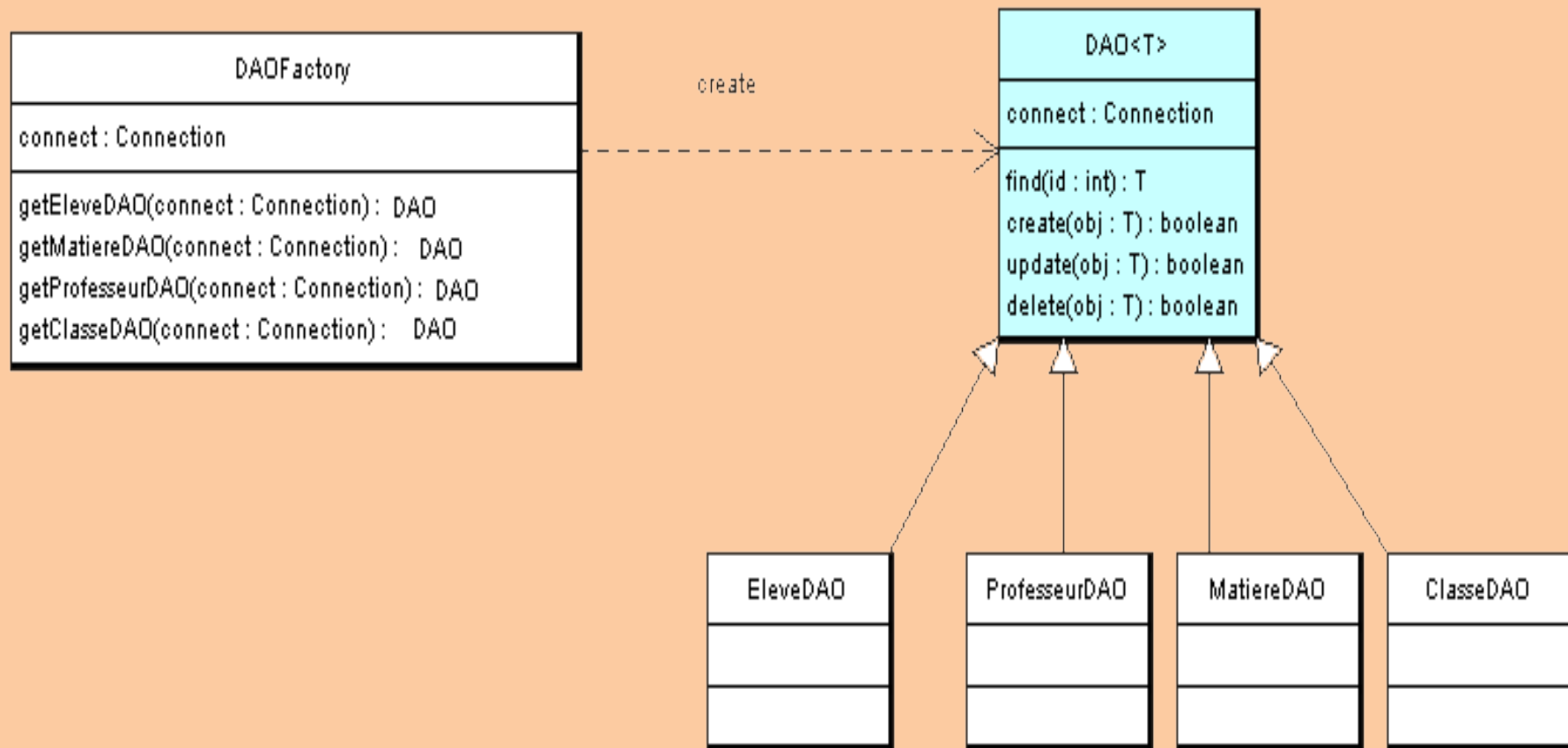
            while(result.next())
                classe.addProfesseur(profDao.find(result.getInt("prof_id")));

            EleveDAO eleveDao = new EleveDAO(this.connect);
            result = this.connect.createStatement().executeQuery(
                "SELECT elv_id, elv_nom, elv_prenom FROM eleve " +
                "INNER JOIN classe ON elv_cls_k = cls_id AND cls_id = " + id
            );

            while(result.next())
                classe.addEleve(eleveDao.find(result.getInt("elv_id")));
        }
    } catch (SQLException e) {
        e.printStackTrace();
    }
    return classe;
}

```

Factory DAO



Source

- <http://cyrille-herby.developpez.com/tutoriels/java/mapper-sa-base-donnees-avec-pattern-dao/>
- <https://openclassrooms.com/courses/apprenez-a-programmer-en-java/lier-ses-tables-avec-des-objets-java-le-pattern-dao>